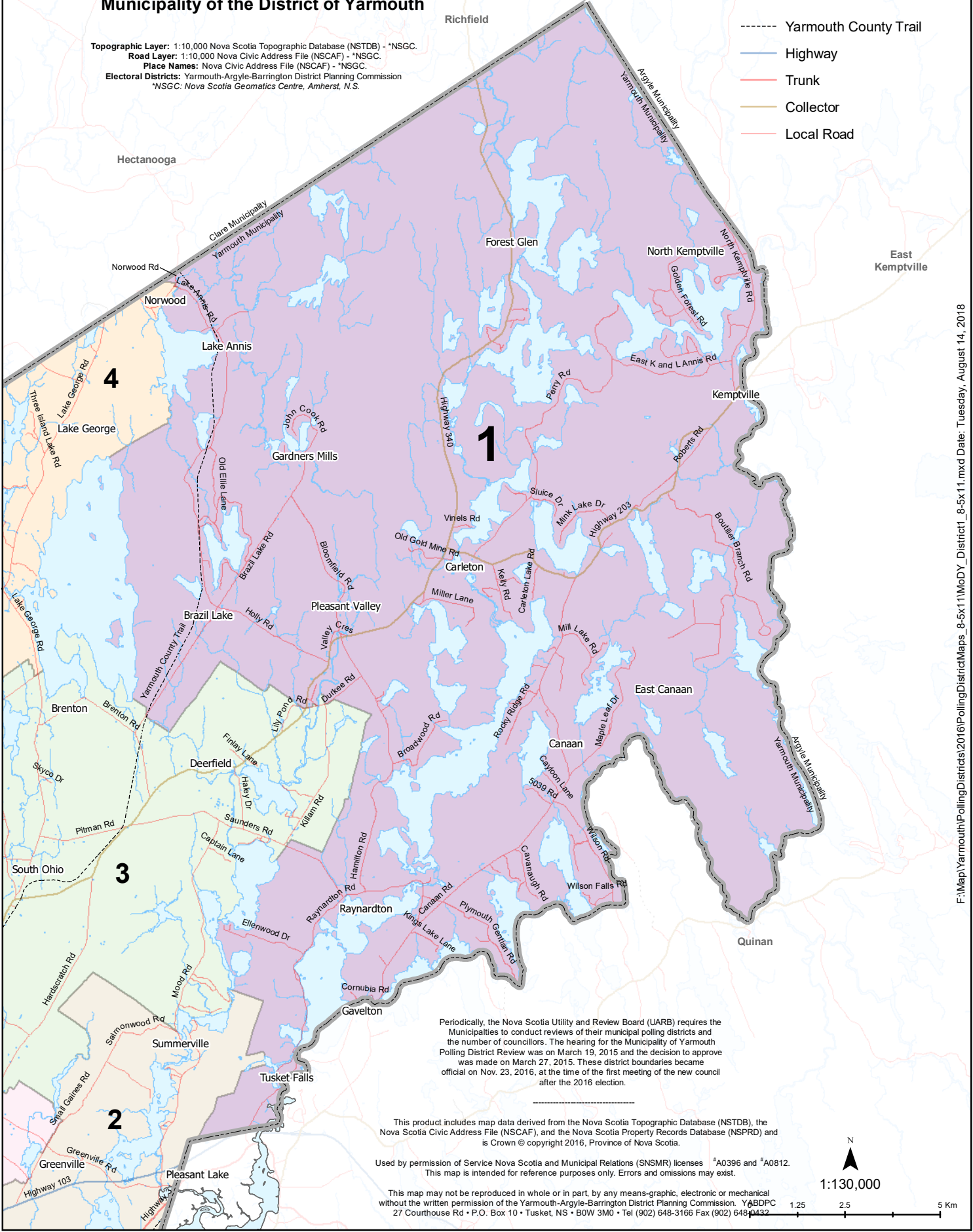


# Polling District 1

## Municipality of the District of Yarmouth

Topographic Layer: 1:10,000 Nova Scotia Topographic Database (NSTDB) - \*NSGC.  
 Road Layer: 1:10,000 Nova Civic Address File (NSCAF) - \*NSGC.  
 Place Names: Nova Civic Address File (NSCAF) - \*NSGC.  
 Electoral Districts: Yarmouth-Argyle-Barrington District Planning Commission  
 \*NSGC: Nova Scotia Geomatics Centre, Amherst, N.S.

- Yarmouth County Trail
- Highway
- Trunk
- Collector
- Local Road



Periodically, the Nova Scotia Utility and Review Board (UARB) requires the Municipalities to conduct reviews of their municipal polling districts and the number of councillors. The hearing for the Municipality of Yarmouth Polling District Review was on March 19, 2015 and the decision to approve was made on March 27, 2015. These district boundaries became official on Nov. 23, 2016, at the time of the first meeting of the new council after the 2016 election.

This product includes map data derived from the Nova Scotia Topographic Database (NSTDB), the Nova Scotia Civic Address File (NSCAF), and the Nova Scotia Property Records Database (NSPRD) and is Crown © copyright 2016, Province of Nova Scotia.

Used by permission of Service Nova Scotia and Municipal Relations (SNSMR) licenses #A0396 and #A0812. This map is intended for reference purposes only. Errors and omissions may exist.

This map may not be reproduced in whole or in part, by any means-graphic, electronic or mechanical without the written permission of the Yarmouth-Argyle-Barrington District Planning Commission. YABDPC 27 Courthouse Rd • P.O. Box 10 • Tusket, NS • B0W 3M0 • Tel (902) 648-3166 Fax (902) 648-3432

